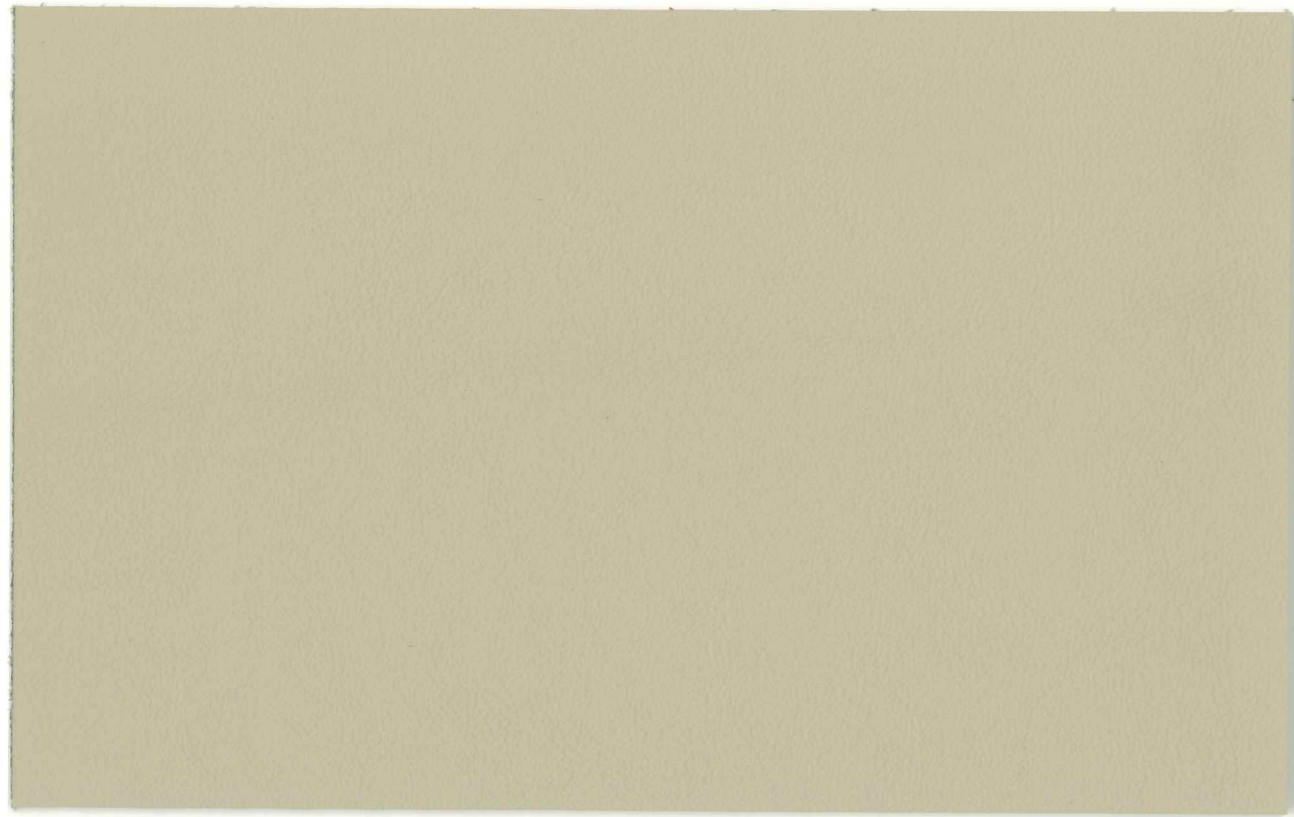
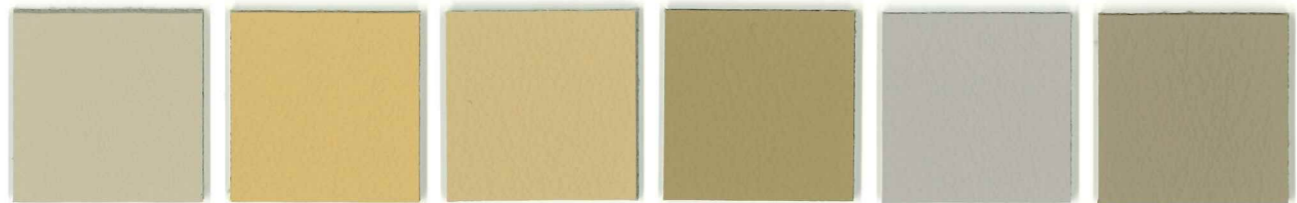


# Kansas



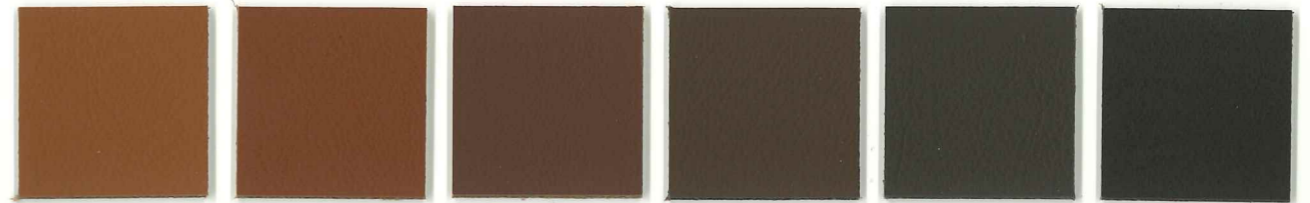
2052 2192 2264 2024 2042 2282



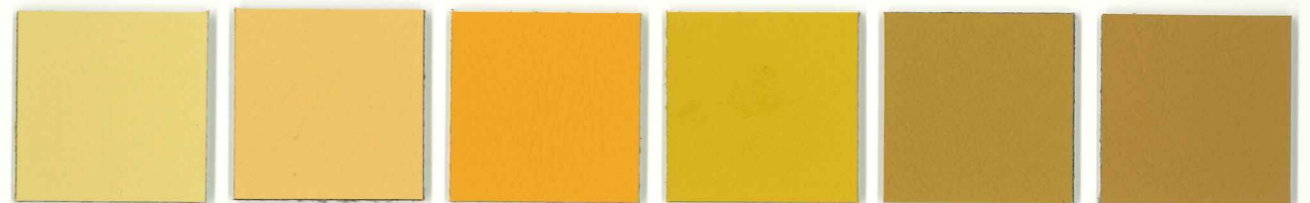
2172 2194 2004 2212 2256 2106



2054 2170 2210 2214 [redacted] 2066



2038 2068 2060 2062 2126 2040



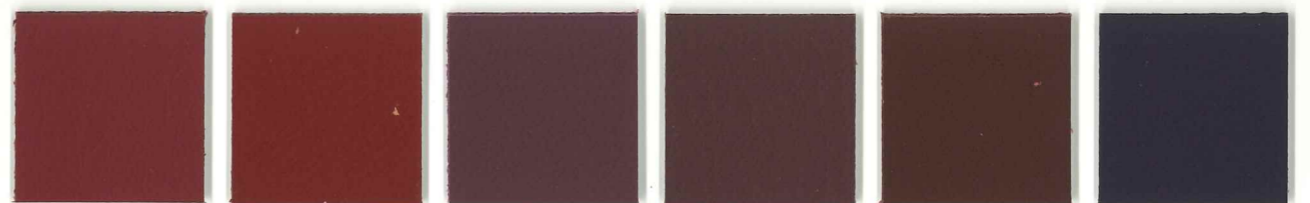
2116 2118 2114 2044 2018 2124



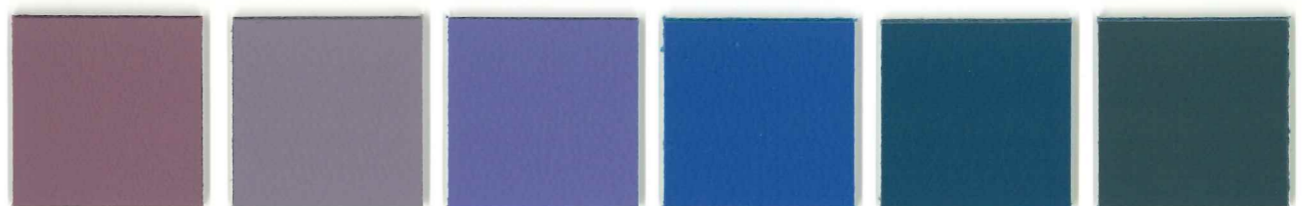
2100 2050 2020 2070 2202 2026



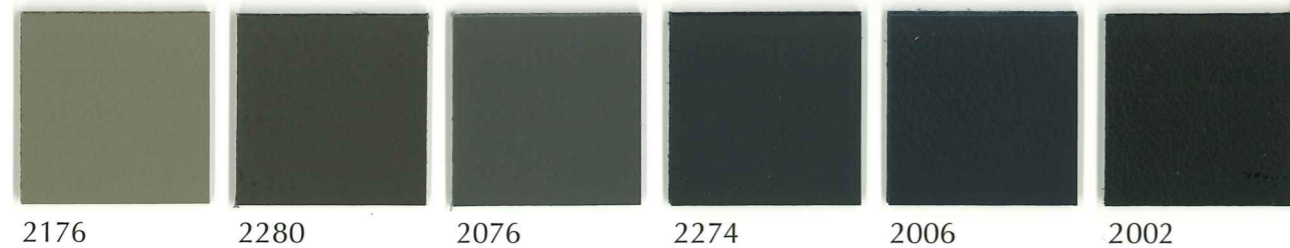
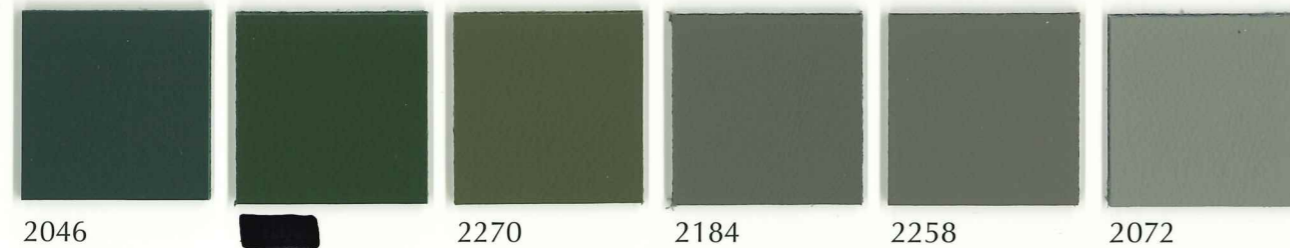
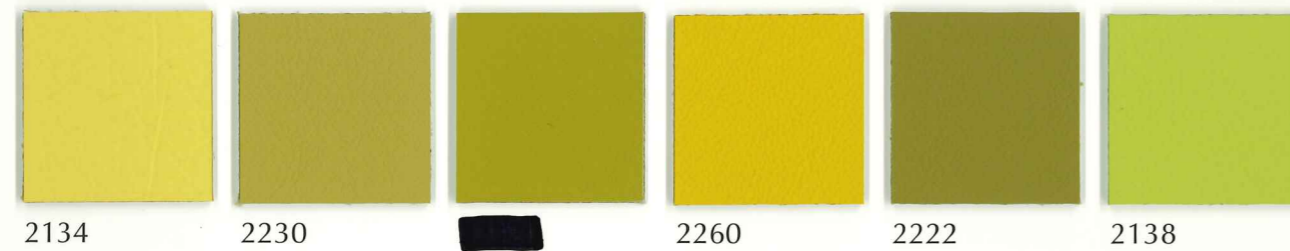
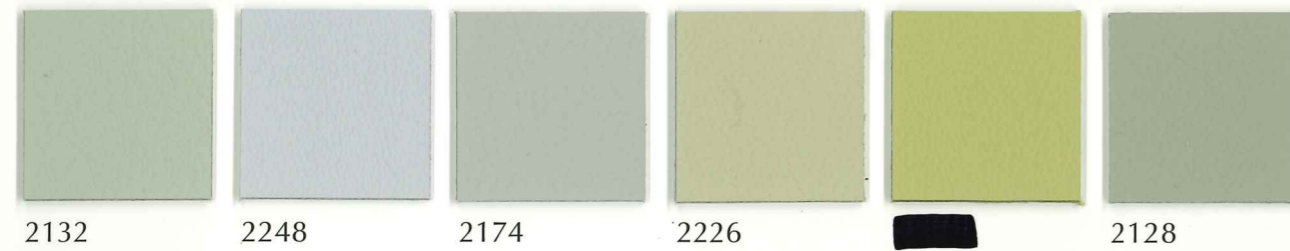
2122 2112 2082 2034 2120 2284



[redacted] 2080 2252 [redacted] 2088 2254



2102 [redacted] [redacted] 2000 2240 2242



### Kansas - 90 Farben auf Lager

**Herkunft:** Süd-Deutsche Bullenhäute  
**Stärke:** 1.2/1.4 mm  
**Oberfläche:** Nappaleder, pigmentiert mit sehr feinem Narbenbild

Kansas ist ein angenehm weiches chromgegerbtes Leder mit sehr gutem Griff und sehr feinem Narbenbild. Mit der schützenden Deckschicht eignet sich das Leder sehr gut für einen sehr intensiven Gebrauch.

### Kansas - 90 colours from stock

**Origin:** South German bullhides  
**Thickness:** 1.2/1.4 mm  
**Surface:** Pigmented nappaleather

Kansas is a soft and elegant nappa leather with a very small grain structure. A protective layer makes it suitable for daily intensive use. Due to the use of South German bullhides the cutting yield is very good.

### Kansas - 90 couleurs de stock

**Origine:** Peaux de taureaux sud-allemands  
**Epaisseur:** 1.2/1.4 mm  
**Traitement:** Pigmenté, grain lisse

Kansas est un cuir nappa doux et agréable avec un grain très lisse. Une couche pigmentaire résistante en fait un cuir apte à usage très intensif. Le choix des peaux est des meilleurs grâce à l'utilisation de peaux de taureaux sud-allemands.

### Kansas - 90 kleuren uit voorraad

**Oorsprong:** Zuid-Duitse stierenhuiden  
**Dikte:** 1.2/1.4 mm  
**Typologie:** Gepigmenteerd nappaleder

Kansas is een aangenaam en zacht nappaleder met een zeer fijn nerfbeeld. Een resistente pigmentlaag maakt dit leder uitermate geschikt voor dagelijks intensief gebruik. De sortering is zeer goed dankzij het gebruik van Europese stierenhuiden.

#### PHYSICAL TESTS

Requirements and standard reference	Test Method	Real Value
Dry rub fastness	EN ISO 11640	500 cycles value ≥ 4 grey scale
Wet rub fastness	EN ISO 11640	250 cycles value ≥ 3/4 grey scale
Perspiration rub fastness	EN ISO 11640	80 cycles value ≥ 3/4 grey scale
Light Fastness	EN ISO 105-B02 (Met. 3)	72 h exposition value ≥ 5 blue scale
Adhesion of finish	EN ISO 11644	≥ 2 N/10 mm
Tear Resistance / Tear Strength	EN ISO 3377-1	≥ 20 N
Flexing endurance	EN ISO 5402-1	50000

#### FIRE RESISTANCE

Requirements and standard reference	Test Method
Ignition Source Smouldering Cigarette	BS 5852 PART 1 (IGNITION SOURCE 0) EN 1021-1 CALIFORNIA TB 117:2013 NFPA 260/UFAC
Ignition Source Match Flame Equivalent	BS 5852 PART 1 (IGNITION SOURCE 1) EN 1021-2 CALIFORNIA TB 117:2013 NFPA 260/UFAC
Treatment only possible on request	FAR 25.853 (a) Appendice F Parte (a)l(i)ii 12 sec. FAR 25.853 (a) Appendice F Parte (a)l(i) 60 sec. BS 5852 CRIB 5
International Maritime standard for upholstery furniture	FTP CODE 2010 part 8 (ex IMO A652 (16))

#### CHEMICAL CHARACTERISTICS

Requirements and standard reference
Processed in conformity with REACH regulation